

Indy CamTM Installation Guide for Indigo²TM Workstations

Document Number 007-2435-001

CONTRIBUTORS

Written by Kathy Chaix

Production by Chris Glazek

Technical Contributions by Bob Abbott, Grant Dorman, and I-Ching Wang.

© Copyright 1994, Silicon Graphics, Inc.— All Rights Reserved

This document contains proprietary and confidential information of Silicon Graphics, Inc. The contents of this document may not be disclosed to third parties, copied, or duplicated in any form, in whole or in part, without the prior written permission of Silicon Graphics, Inc.

RESTRICTED RIGHTS LEGEND

Use, duplication, or disclosure of the technical data contained in this document by the Government is subject to restrictions as set forth in subdivision (c) (1) (ii) of the Rights in Technical Data and Computer Software clause at DFARS 52.227-7013 and/or in similar or successor clauses in the FAR, or in the DOD or NASA FAR Supplement. Unpublished rights reserved under the Copyright Laws of the United States. Contractor/manufacturer is Silicon Graphics, Inc., 2011 N. Shoreline Blvd., Mountain View, CA 94039-7311.

Silicon Graphics and IRIS are registered trademarks and IRIX, Indy Cam, and Indigo² Video are trademarks of Silicon Graphics, Inc. .

Table of Contents

1. **Introduction** 1
Using the Camera 1

2. **Installing and Adjusting the Indy Cam** 3
Installing the Camera 3
Checking the Installation 5
Adjusting the Camera 7

Figures

- Figure 2-1** Connecting the Indy Cam cable to Indigo² Video 4
- Figure 2-2** Sliding open the Indy Cam camera lens cover 5
- Figure 2-3** Video Panel 6
- Figure 2-4** Viewing images through the camera in the Capture tool 7

Introduction

This guide tells you how to set up and use the Indy Cam™ camera with an Indigo²™ workstation that has Indigo² Video™ installed.

If you received Indigo² Video at the same time you received Indy Cam, install the video option first then install the camera. See the *Galileo Video™*, *Indigo² Video*, and *Indy Video™ Owner's Guide* for information on how to install and use the product.

You should also have InPerson™, a video teleconferencing software application that works with Indigo² Video. See the documentation that arrived with InPerson for directions on how to install and use the product.

As part of the Indy Cam option you received the camera, the Galileo 3.0.2 CD or later, and this manual.

Using the Camera

The Indy Cam works with a number of applications that ship standard with Silicon Graphics® software:

Capture, MovieMaker, MoviePlayer

Use the media tools to create and edit your own video recordings. See the *Media Tools User's Guide* in IRIS InSight™ or the on-line help for each of the tools.

ImageVision™ tools

Once you capture an image with the camera, use the ImageVision tools to enhance it and then arrange it to print or use in other applications. See the *ImageVision Tools User's Guide* in IRIS InSight for more information.

Video Panel

Use the Video Panel to check that the Indy Cam is installed correctly and then to adjust the color and white balance. See the *Control Panel User's Guide* in IRIS Insight and the on-line help for information.

Installing and Adjusting the Indy Cam

The Indy Cam plugs into the digital port on the Indigo² Video board installed in your Indigo² workstation.

Installing the Camera

To connect the camera, follow these steps:

1. Turn off the workstation.
 - Open the front cover.
 - Press and release the power switch on the front of the system to shut down the software and power off the system.

The system powers off automatically.

2. Face the back of the workstation and connect the camera cable to the second port on the Indigo² board. The second port is a 60-pin DIN connector.

The Indigo² Video cable is connected to the first port. The board and the ports are shown in Figure 2-1.

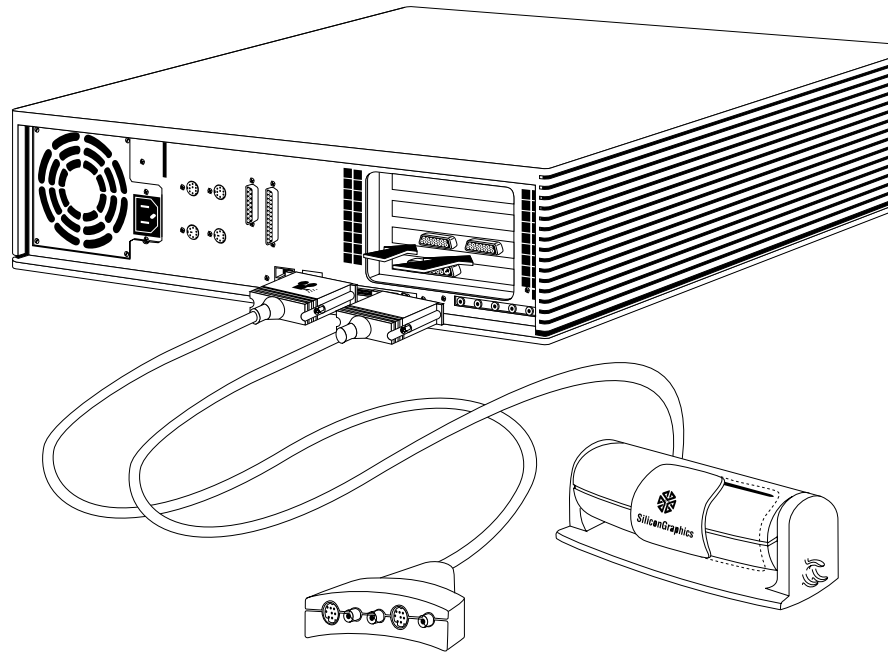


Figure 2-1 Connecting the Indy Cam cable to Indigo² Video

3. Place the camera on top of the monitor. If you wish, you can attach the microphone to the side of the camera.

Note: The Indy Cam cable is not long enough to reach the top of your monitor if your Indigo² is on the floor beside your desk.

4. Slide open the plastic lens cover to expose the lens, as shown in Figure 2-2.

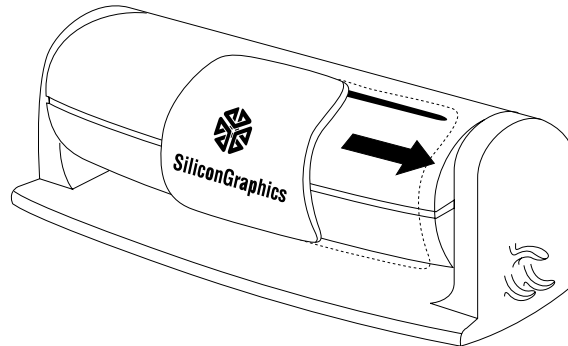


Figure 2-2 Sliding open the Indy Cam camera lens cover

5. Remove the small round lens cap covering the lens.

Checking the Installation

Follow these steps to make sure the system recognizes the new hardware:

1. Press and release the power button to turn on the power to the workstation.

After the power-on diagnostics run, the system boots up and brings you to the login screen.

2. Log in to your account.

3. Open the Video Panel.
 - From the Find toolchest choose the “Icon Catalog” and select “Control Panels” from the rollover menu.
 - Double-click on the *videopanel* icon.

The Video Panel is shown in Figure 2-3.

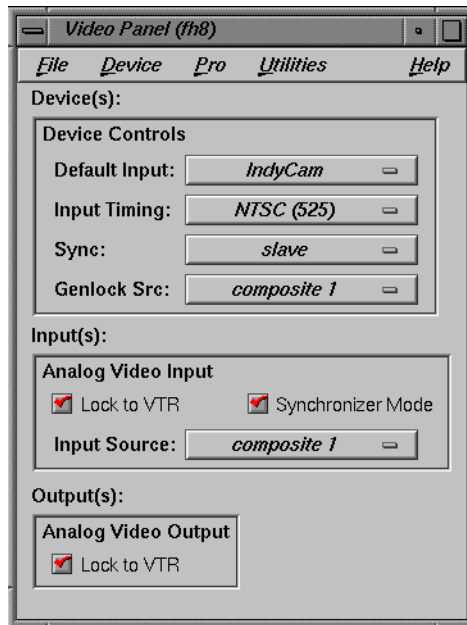


Figure 2-3 Video Panel

4. Click on the Default Input field and choose “Indy Cam” from the list.
5. Make sure synchronizer mode is turned on. Click in the checkbox to turn it on.

If “Indy Cam” does not appear in the Default Input list, go back and repeat the installation. Make sure you’ve also installed the software on the Galileo CD. See the CD insert for instructions.

You only need to restart the workstation the first time you plug in the Indy Cam. After the first time, you can unplug it and plug it back in without restarting the system. You will, however, need to adjust the colors. See the section below.

Adjusting the Camera

To view images through the camera, follow these steps:

6. Open the Capture tool.
 - From the Find toolchest choose “Icon Catalog” and select “Media Tools” from the rollover menu.
 - Double-click the *capture* icon.

Capture is shown in Figure 2-4.

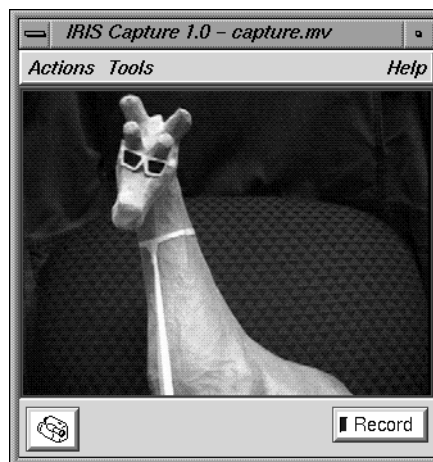


Figure 2-4 Viewing images through the camera in the Capture tool

If the lens is pointed at you, you see yourself in a window on the screen. If the image is out of focus, twist the lens in either direction to focus it.

The color of the image is affected by the amount of light in your environment. If the color isn't quite right, use the controls in the Signal Controls panel to adjust the colors:

1. In the Video Panel choose "IndyCam" from the Pro menu. Rollover to "Signal Controls".
2. Click on the *White Balance* button on the panel that appears. The color of the image changes to adjust for the amount of white in your environment.
3. Click the Automatic Gain Control on or off to adjust the brightness.

For more information on recording an image to a file using the Indy Cam, see the information in the Capture Help menu. You can also select On-line Books from the Help toolchest and double-click on the *Media Tools User's Guide*. Chapter 2 contains information on how to use the Capture tool.

We'd Like to Hear From You

As a user of Silicon Graphics documentation, your comments are important to us. They help us to better understand your needs and to improve the quality of our documentation.

Any information that you provide will be useful. Here is a list of suggested topics to comment on:

- General impression of the document
- Omission of material that you expected to find
- Technical errors
- Relevance of the material to the job you had to do
- Quality of the printing and binding

Please include the title and part number of the document you are commenting on. The part number for this document is 007-2435-001.

Thank you!

Three Ways to Reach Us



The **postcard** opposite this page has space for your comments. Write your comments on the postage-paid card for your country, then detach and mail it. If your country is not listed, either use the international card and apply the necessary postage or use electronic mail or FAX for your reply.



If **electronic mail** is available to you, write your comments in an e-mail message and mail it to either of these addresses:

- If you are on the Internet, use this address: techpubs@sgi.com
- For UUCP mail, use this address through any backbone site:
[your_site]!sgi!techpubs



You can forward your comments (or annotated copies of manual pages) to Technical Publications at this **FAX** number:

415 965-0964